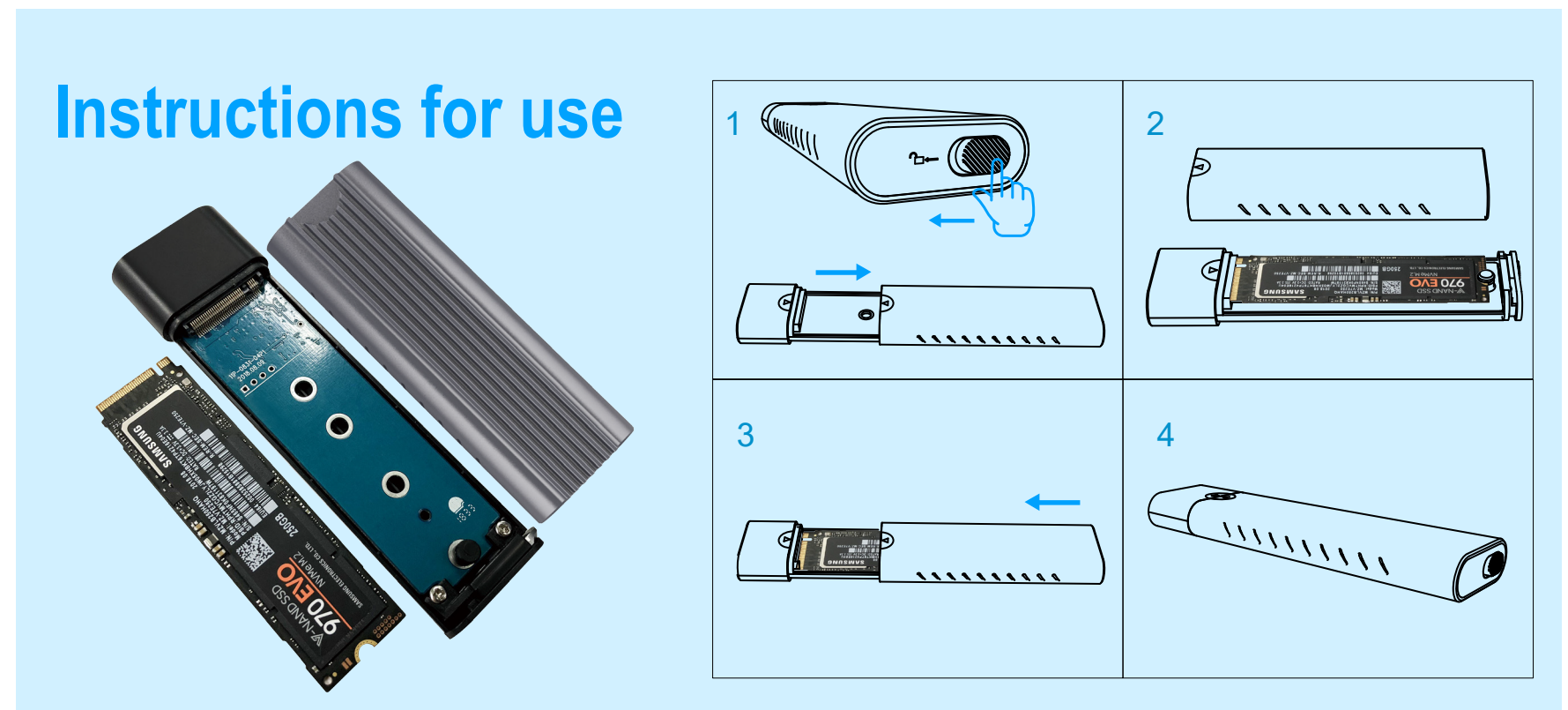


Portable Tool-Free 2 in 1 M.2 SSD External Enclosure Fullink Model No.: 1028

Specification:

1. Compatible with M-key (PCIe NVMe protocol) & B-key (SATA protocol).
2. Support data transmission speed up to 10Gbps on condition of M.2 PCIe NVMe protocol and 6Gbps on condition of M.2 SATA protocol.
3. Connect M.2 SSD with any smart electronic device with a USB-C port (Thunderbolt 3 compatible) for file backup, disk upgrade, data recovery.
4. Support 2TB storage.
5. This M.2 Enclosure includes ports for airflow on either side of the SSD as well as thermal pads for heat dissipation which makes it has excellent heat dissipation function.
6. Tool-free installation and no driver needed, just plug and play.
7. Support the M.2 SSD size: 2230, 2242, 2260, 2280.



Fullink Technology Co., Ltd
Website: <https://www.fullink.com/>